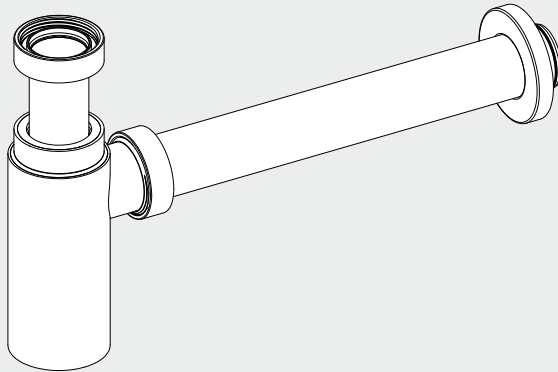


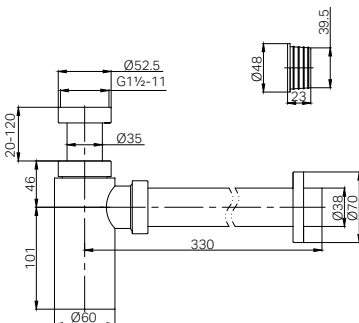
40mm Round Bottle Trap II

Nero



Versions:202506

Drawing



Specifications

SKU
25A001
Watermark License
WMK26021

Packaging Includes

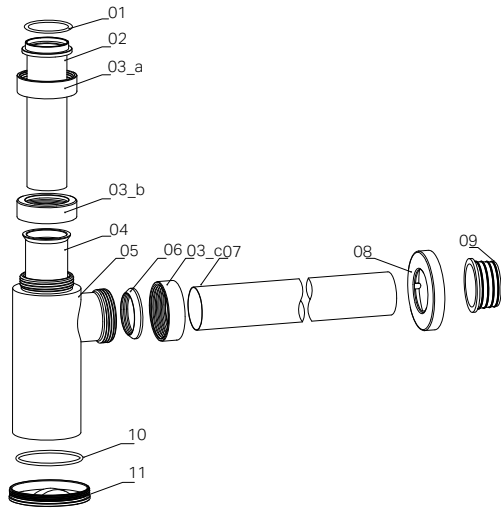
1x Bottle Trap

Finish

 Chrome 25A001CH	 Gun Metal 25A001GM	 Brushed Bronze 25A001BZ
 Matte Black 25A001MB	 Brushed Gold 25A001BG	 Brushed Nickel 25A001BN

*Dimensions are nominal measurements only

INSTALLATION INSTRUCTIONS

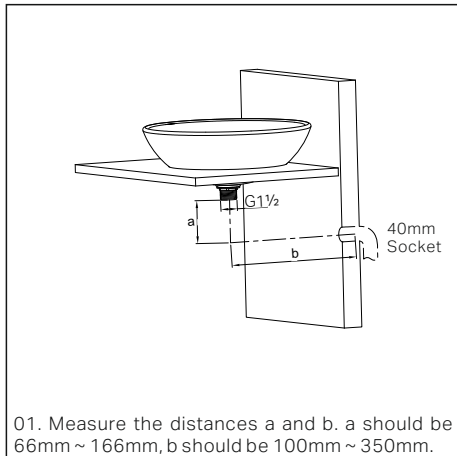


- Parts Names**
- 01 Rubber Washer x 1
 - 02 Inlet Pipe x 1
 - 03 Retaining Nut x 3
 - 04 Protective Tube x 1
 - 05 Bottle Trap x 1
 - 06 Beveled Rubber Gasket x 1
 - 07 Outlet Pipe x 1
 - 08 Wall Plate x 1
 - 09 Kee Seal x 1
 - 10 O-ring x 1
 - 11 Cap x 1

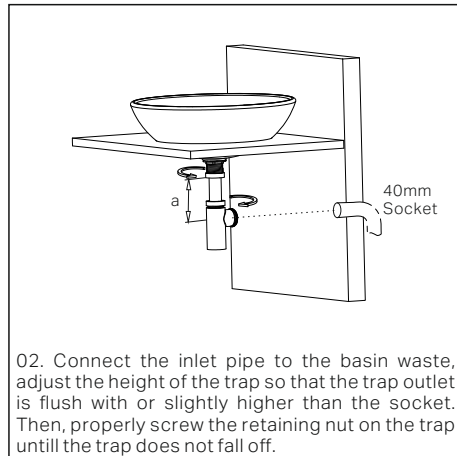
General Information & Compliance

- The 40mm Round Bottle Trap II suits 40mm Plug & Waste.
- The 40mm Round Bottle Trap II must be installed in compliance with AS/NZS 3500 and all relevant Australian plumbing regulations. Installation must be carried out by a licensed plumber to ensure proper functionality.

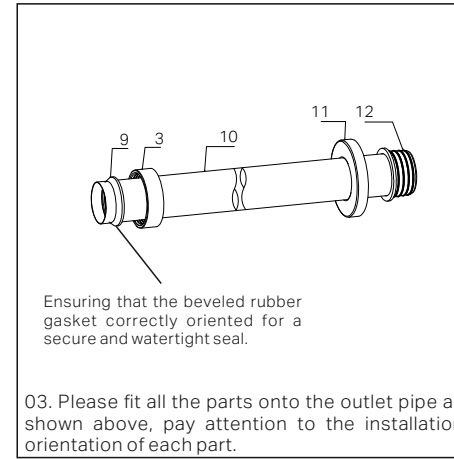
Installation Steps



01. Measure the distances a and b. a should be 66mm ~ 166mm, b should be 100mm ~ 350mm.

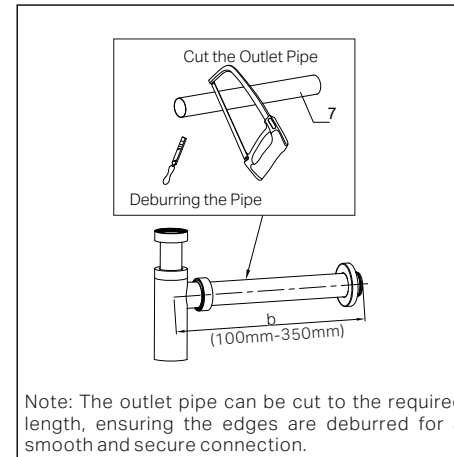


02. Connect the inlet pipe to the basin waste, adjust the height of the trap so that the trap outlet is flush with or slightly higher than the socket. Then, properly screw the retaining nut on the trap until the trap does not fall off.

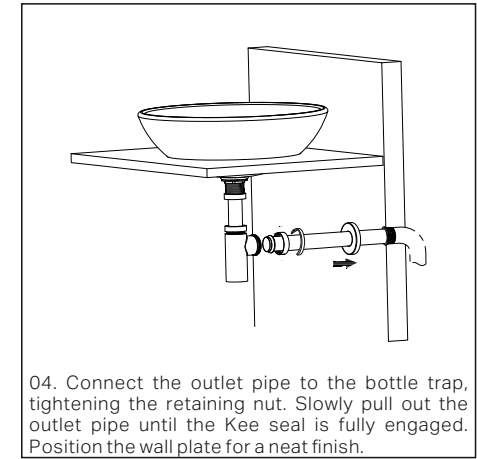


Ensuring that the beveled rubber gasket correctly oriented for a secure and watertight seal.

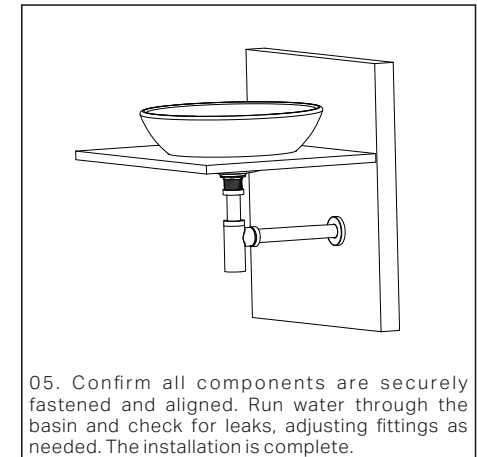
03. Please fit all the parts onto the outlet pipe as shown above, pay attention to the installation orientation of each part.



Note: The outlet pipe can be cut to the required length, ensuring the edges are deburred for a smooth and secure connection.



04. Connect the outlet pipe to the bottle trap, tightening the retaining nut. Slowly pull out the outlet pipe until the Kee seal is fully engaged. Position the wall plate for a neat finish.



05. Confirm all components are securely fastened and aligned. Run water through the basin and check for leaks, adjusting fittings as needed. The installation is complete.

Maintenance & Care

Routine Maintenance

- Regularly unscrew the trap access cap to remove accumulated debris and prevent blockages.
- Clean external surfaces using warm soapy water and a non-abrasive cloth to maintain the finish.
- Periodically check all seals, washers, and connections for wear or potential leaks.

Preventative Measures

- Avoid disposing of solid waste, grease, or hair into the drainage system to reduce the risk of clogs.
- Run water through the basin regularly to maintain the water seal and prevent odours from escaping.
- Ensure the Kee seal remains properly fitted to prevent leaks at the in-wall connection.

Nero

